

# Service resources: Oncology

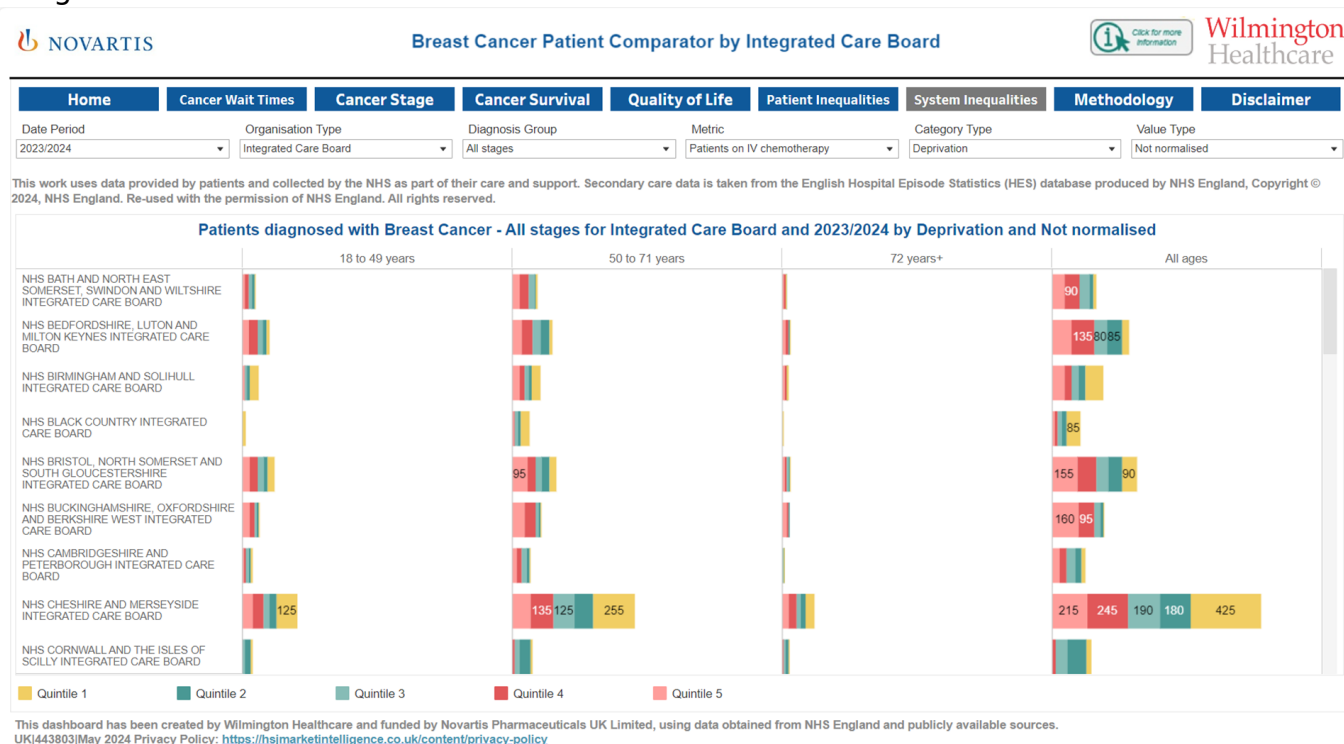
## The Novartis Breast Cancer Health Inequalities Tool

**The Novartis Breast Cancer Health Inequalities (BC HI) Tool** brings together a range of datasets to build a greater understanding of the drivers behind the current variation that exists across breast cancer pathways, as well as in breast cancer patient outcomes, at a national and local level across England.

The BC HI interactive dashboard-based tool can highlight relationships between breast cancer and socioeconomic factors, such as deprivation, ethnicity and rurality, at different stages of disease and within different age groups.

The BC HI Tool showcases a variety of real-world data, such as cancer referrals, stage of diagnosis, survival and quality of life metrics, as well as an in-depth analysis of Hospital Episode Statistics data to highlight disparity, variation and unmet need, both nationally and at a system level (Cancer Alliance/ICS).

### Image

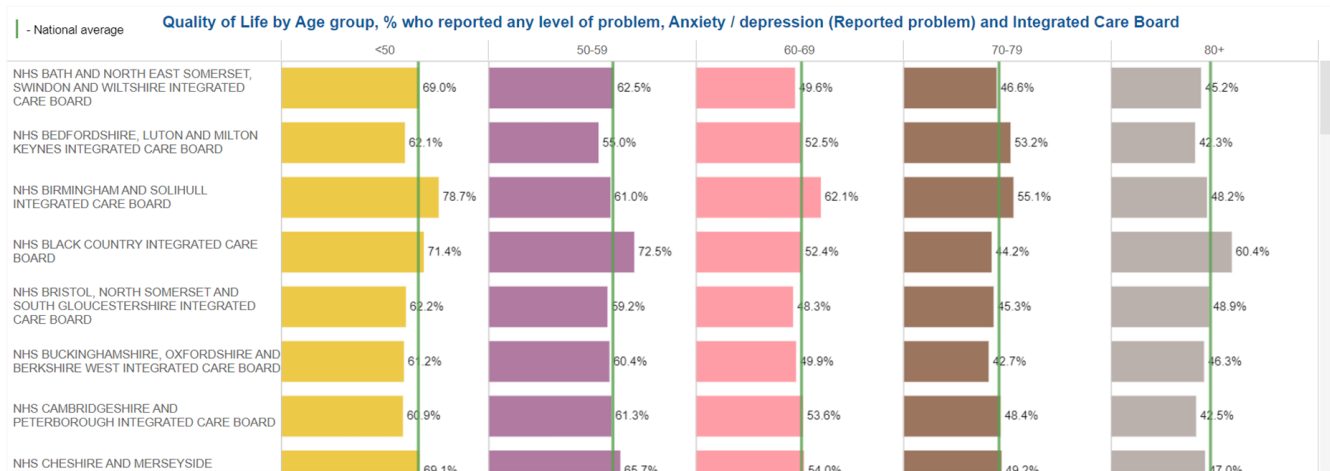


### System inequalities

### Image

| Home                                       | Cancer Wait Times | Cancer Stage               | Cancer Survival                     | Quality of Life                          | Patient Inequalities  | System Inequalities | Methodology | Disclaimer |
|--------------------------------------------|-------------------|----------------------------|-------------------------------------|------------------------------------------|-----------------------|---------------------|-------------|------------|
| Organisation Type<br>Integrated Care Board | Region<br>(All)   | Organisation Name<br>(All) | Metric<br>% who reported any lev... | Reported problem<br>Anxiety / depression | Category<br>Age group |                     |             |            |

This work uses data that has been provided by patients and collected by the NHS as part of their care and support. The data is collated, maintained and quality assured by the National Cancer Registration and Analysis Service, which is part of NHS England (NHSE) and licensed under the Open Government Licence. Available from: <https://www.cancerdata.nhs.uk/>



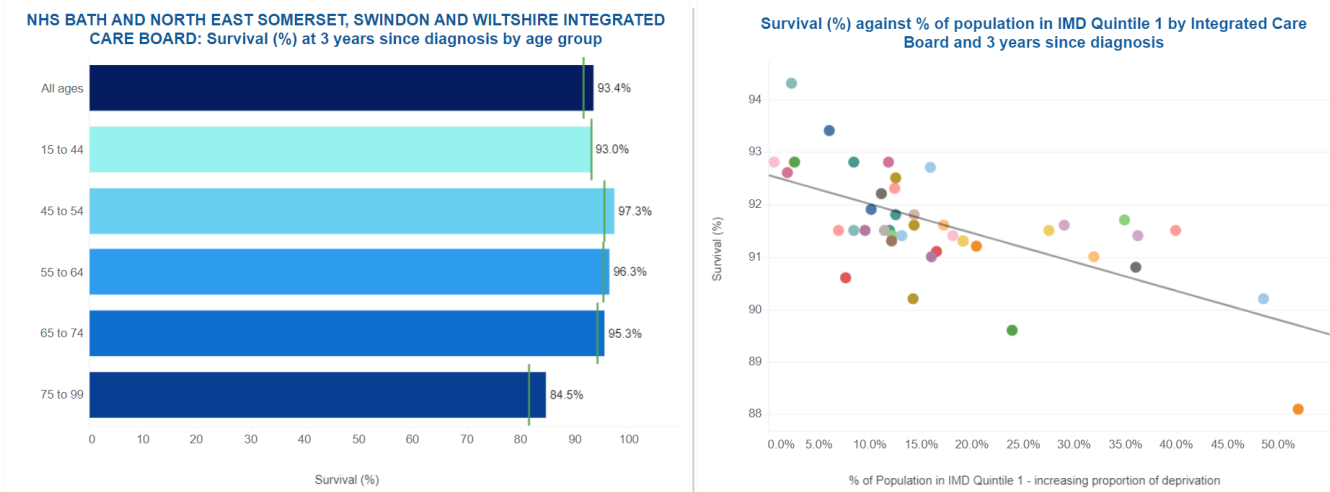
This dashboard has been created by Wilmington Healthcare and funded by Novartis Pharmaceuticals UK Limited, using data obtained from NHS England and publicly available sources. UK(443803)May 2024 Privacy Policy: <https://hsjmarketintelligence.co.uk/content/privacy-policy>  
Note: East of England South and East of England North cannot be merged.

## Quality of life

### Image

| Home                                       | Cancer Wait Times | Cancer Stage                                             | Cancer Survival                 | Quality of Life        | Patient Inequalities  | System Inequalities                                                   | Methodology | Disclaimer |
|--------------------------------------------|-------------------|----------------------------------------------------------|---------------------------------|------------------------|-----------------------|-----------------------------------------------------------------------|-------------|------------|
| Organisation Type<br>Integrated Care Board | Region<br>All     | Organisation Name<br>NHS BATH AND NORTH EAST SOMERSET... | Time Since Diagnosis<br>3 years | Metric<br>Survival (%) | Age Group<br>All ages | Deprivation level: IMD Quintiles<br>% of Population in IMD Quintile 1 |             |            |

This work uses data that has been provided by patients and collected by the NHS as part of their care and support. The data is collated, maintained and quality assured by the National Cancer Registration and Analysis Service, which is part of NHS England (NHSE) and licensed under the Open Government Licence. Available from: <https://www.cancerdata.nhs.uk/>



This dashboard has been created by Wilmington Healthcare and funded by Novartis Pharmaceuticals UK Limited, using data obtained from NHS England and publicly available sources. UK(443803)May 2024 Privacy Policy: <https://hsjmarketintelligence.co.uk/content/privacy-policy>

## Cancer survival

## Access the interactive Novartis Breast Cancer Health Inequalities Tool

[Click here to view](#)

Insights from the BC HI Tool can support the goal of reducing health inequalities across the NHS at a national and system level, aligning with the NHS Core20PLUS5 ambition. Drawing on deprivation data from the Office for National Statistics, the tool maps breast cancer outcomes in relation to deprivation at a national, Cancer Alliance and ICS level, providing a breakdown of outcomes data across deprivation quintiles.

## **Access the Novartis Health Inequalities Pledge**

[Click here to view](#)

This dashboard has been created by Wilmington Healthcare and funded by Novartis Pharmaceuticals UK Limited, using data obtained from NHS England and publicly available sources.

Image



# **The Novartis Breast Cancer Health Inequalities Tool**

User Guide

2024

All rights reserved. No part of this information may be reproduced, stored in a retrieval system, or transmitted in any form by any means without the prior permission of Wilmington PLC. The information contained herein is confidential and may not be distributed, transferred or communicated to any other party without the prior permission of Wilmington PLC. Wilmington PLC accept no responsibility for decisions taken based on the information contained within this file.

This has been created by Wilmington Healthcare, funded by Novartis

UK|443821|May 2024

**Breast Cancer Health Inequalities Tool supporting user guide**

BC HI, Breast Cancer Health Inequalities; ICS, integrated care system; NHS, National Health Service.

UK | February 2025 | FA-11223209

Adverse events should be reported. Reporting forms and information can be found at [www.mhra.gov.uk/yellowcard](http://www.mhra.gov.uk/yellowcard). Adverse events should also be reported to Novartis online through the pharmacovigilance intake (PVI) tool at [www.novartis.com/report](http://www.novartis.com/report), or alternatively email [medinfo.uk@novartis.com](mailto:medinfo.uk@novartis.com) or call 01276 698370.

---

**Source URL:**

*<https://www.pro.novartis.com/uk-en/healthcare-systems-support/disease-area-resources/oncology/bc-inequalities-tool>*