

## Service resources: Oncology

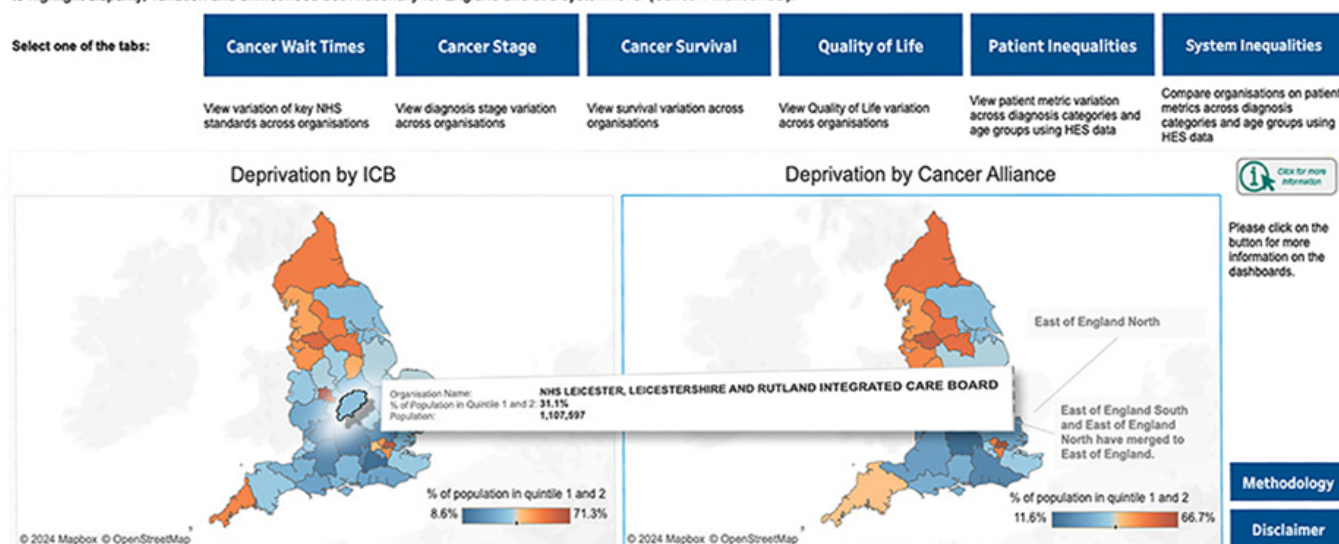
Explore our range of useful resources below, designed to support you with your decision making.

### Image

#### Breast Cancer Inequalities Insights Tool

This interactive tool brings together a range of datasets to build a greater understanding of the drivers behind the current variation that exists across breast cancer pathways, and in breast cancer patient outcomes. The tool can highlight the relationship between breast cancer and socioeconomic indicators such as deprivation, ethnicity, and rurality, as well as different age groups at a national and local (Cancer Alliance/ ICB) level. Driving awareness of these relationships can help support local planning and decision making around breast cancer services delivery.

This tool showcases a variety of real-world data, such as cancer referrals, stage of diagnosis, survival and quality of life metrics, as well as an in-depth analysis of Hospital Episode Statistics (HES) data, to highlight disparity, variation and unmet need both nationally for England and at a system-level (Cancer Alliance/ICB).



This dashboard has been created by Wilmington Healthcare and funded by Novartis Pharmaceuticals UK Limited, using data obtained from NHS England and publicly available sources.  
UK(443803)May 2024 Privacy Policy: <https://wilmingtonnhs.uk/wilmington-nhs-privacy-policy>

**Wilmington**  
Healthcare

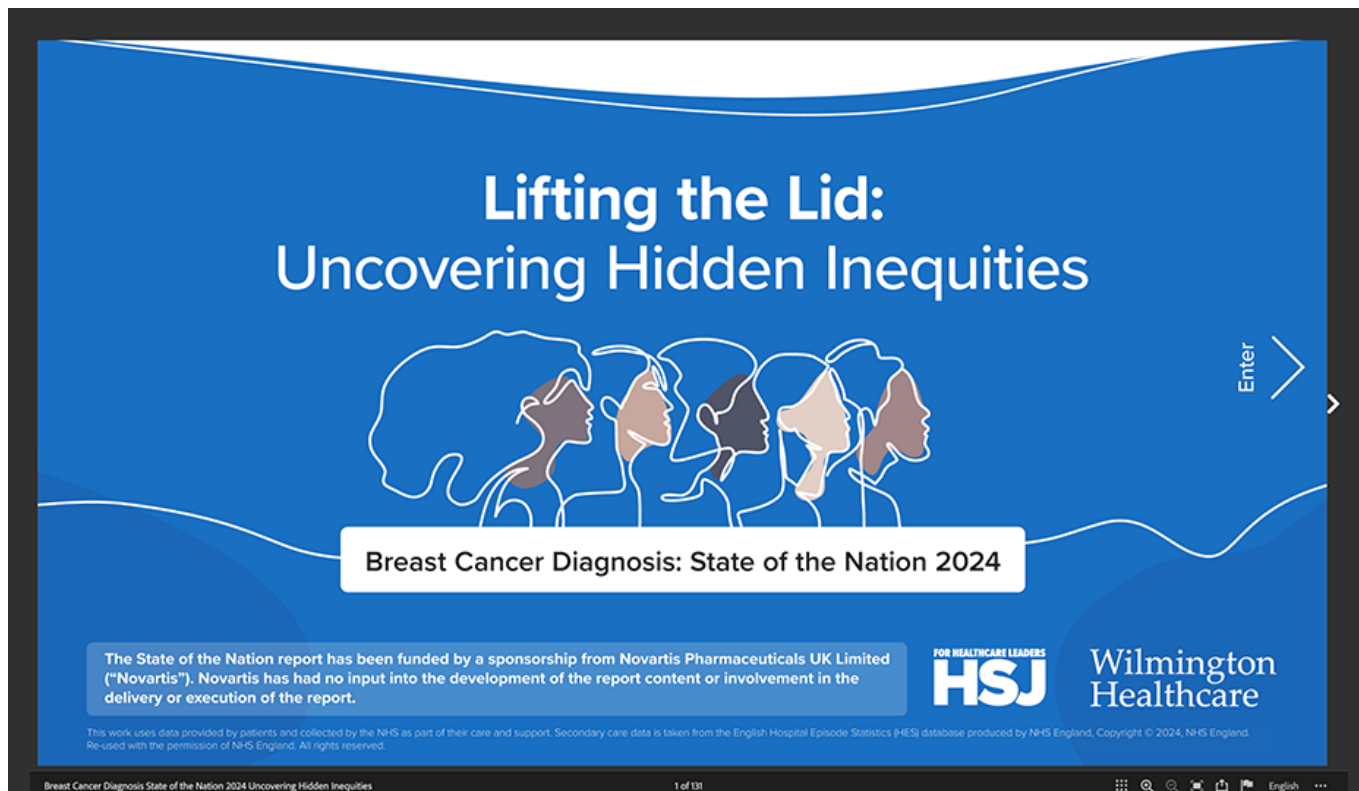
## The Novartis Breast Cancer Health Inequalities Tool

### Brochure

[Find out more](#)

This tool has been created by Wilmington Healthcare and funded by Novartis Pharmaceuticals UK Limited, using data obtained from NHS England and publicly available sources.

### Image



## Breast Cancer diagnosis: State of the Nation 2024

Brochure

[Find out more](#)

This report has been funded by a sponsorship from Novartis Pharmaceuticals UK Limited. Novartis has had no input into the development of the report content or involvement in the delivery or execution of the report.

---

UK | February 2025 | FA-11222250

Adverse events should be reported. Reporting forms and information can be found at [www.mhra.gov.uk/yellowcard](http://www.mhra.gov.uk/yellowcard). Adverse events should also be reported to Novartis online through the pharmacovigilance intake (PVI) tool at [www.novartis.com/report](http://www.novartis.com/report), or alternatively email [medinfo.uk@novartis.com](mailto:medinfo.uk@novartis.com) or call 01276 698370.

---

### Source URL:

<https://www.pro.novartis.com/uk-en/healthcare-systems-support/disease-area-resources/oncology>